

SecureDoc for Mac Media Viewer Version 5.3 User Manual



WINMAGIC[®]
DATA SECURITY

SYSTEM REQUIREMENTS

Client – Mac OS X

Operating System	Apple Mac OS X 10.5.2 or later (Leopard); and up to 10.6.8 (Snow Leopard), LION 10.7.1 and 10.7.2
RAM	256 MB of RAM
Hard Drive	128 MB free space for software installation

Note: CDs and DVDs cannot be used for data recovery purposes for SEDs or the Tiger OS.

INTRODUCTION

The Mac SecureDoc™ Media Viewer is an application that allows you to authenticate using a password in order to view SecureDoc encrypted USB devices. The following sections describe how to access and use the application. When you click on the Mac Media Viewer icon you will see four different options.




Removable Media: Used to access encrypted media

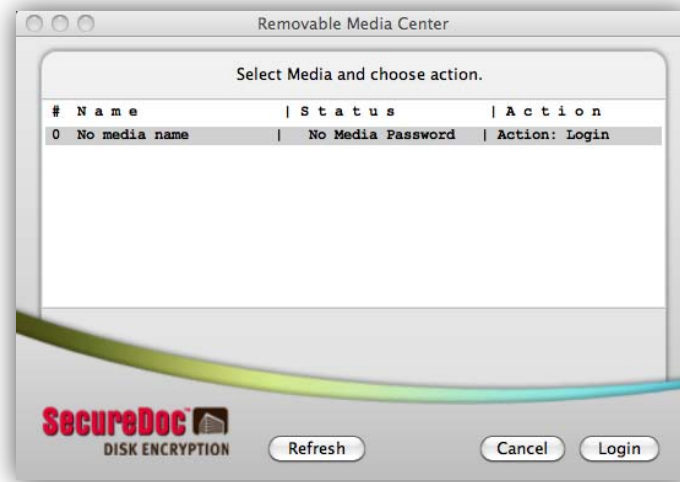
About: Show version information

Quit: Used to close and exit the Media Viewer

Uninstall Media Viewer: Used to remove Media Viewer from the computer

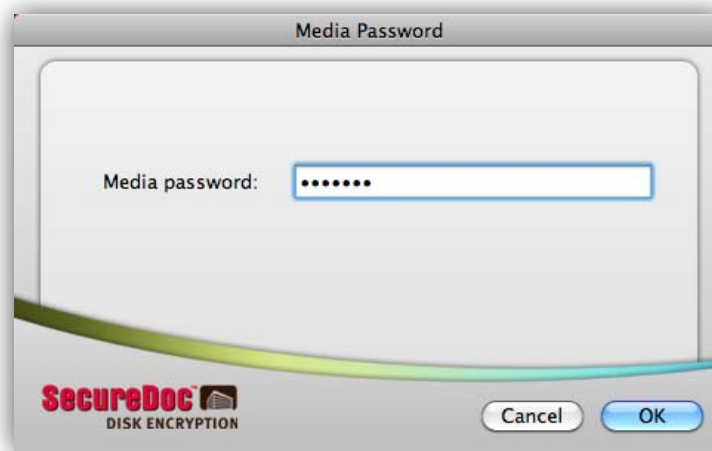
ACCESSING THE VIEWER

1. Click on the SecureDoc icon  located in the menu bar of the main screen.
2. Select the Removable Media option. The following dialog box is displayed:



LOGGING IN TO ENCRYPTED USB

1. Click on the device to which you want to authenticate and then click on the Login button. The Media Password dialog box is displayed as shown below:



2. Enter the password for the selected medium and click on the OK button. Upon successful authentication the files on the device are shown, and you are granted read and write access. Note: Any files saved onto the encrypted USB device are automatically encrypted and protected once the USB drive is removed from the OS.



200 Matheson Blvd. West, Suite 201, Mississauga, ON, Canada L5R 3L7
Tel: (905) 502-7000 | Fax: (905) 502-7001
Web: www.winmagic.com | Email: inquiries@winmagic.com

This White Paper is provided for information purposes, and to promote active consideration and discussion of data encryption for removable media. It is not an exhaustive discussion of the issues, and should be considered only as a starting point for a more complete assessment methodology.

WinMagic provides the world's most secure, manageable and easy-to-use data encryption solutions. Compatible with all editions of Microsoft Windows Vista, XP, and 2000 as well as Mac and Linux platforms, WinMagic's SecureDoc protects sensitive data stored on portable media such as laptops and removable media including USB thumb drives and CD/DVDs. Thousands of the most security conscious enterprises and government organizations around the world depend on SecureDoc to minimize business risks, meet privacy and regulatory compliance requirements, and protect valuable information assets against unauthorized access. With a full complement of professional and customer services, WinMagic supports over three million SecureDoc users in approximately 43 countries. For more information, please visit www.winmagic.com, call 1-888-879-5879 or e-mail us at info@winmagic.com.

SecureDoc, SecureDoc Enterprise Server, Compartmental SecureDoc, SecureDoc PDA, SecureDoc Personal Edition, SecureDoc RME, SecureDoc Removable Media Encryption, MySecureDoc, MySecureDoc Personal Edition Plus, MySecureDoc Media, and SecureDoc Central Database are trademarks of WinMagic Inc. Other products mentioned here in may be trademarks and / or registered trademarks of their respective owner.

© Copyright 2011 WinMagic Inc. All rights reserved. This document is for informational purpose only. WinMagic Inc. makes NO WARRANTIES, expressed or implied, in this document. All specification stated herein are subject to change without notice.