

WHERE THE WORLD COMES TO LEARN

QUICK FACTS

The AEP offers on-site, live online and offline programs to provide learners with maximal flexibility.

- 42 courses offered since 2005
- Over 200 hours of digital assets available for offline learning
- Over 120 customized on-site experiences offered
- Courses specializing in treatment innovations
- 1156 attendees from 26 countries



CONTACT US

Accelerated Education Program
Princess Margaret Cancer Centre
610 University Avenue
Toronto, ON, Canada
M5G 2M9



AEP@rmp.uhn.ca



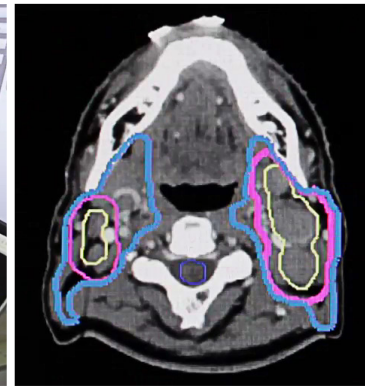
www.AEPeducation.ca



[@AEPCme](https://twitter.com/AEPCme)



youtube.com/AEPeducation



ACCELERATED EDUCATION PROGRAM

AT THE
PRINCESS MARGARET CANCER CENTRE

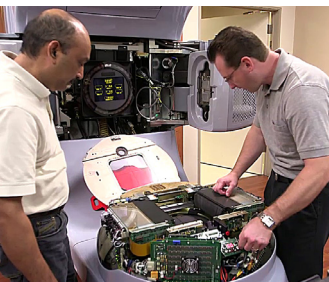




ABOUT US

The **Radiation Medicine Program (RMP)** at the Princess Margaret Cancer Centre is the largest single-site radiation facility in the world. As a global leader in clinical practice, research and education, RMP is committed to providing worldwide leadership in best radiation medicine practices.

The **Accelerated Education Program (AEP)** is a continuing education platform for radiation medicine professionals aiming to keep pace with the rapid advances in the field of radiation oncology. The AEP offers dynamic educational programs promoting the integration of emerging technologies and the creation of innovative workplace models for radiation professionals.



PROGRAM HIGHLIGHTS

- “Ahead of the curve” knowledge and techniques
- Clinical decision making
- Interaction with renowned experts in radiation oncology
- State-of-the-art technology and concepts
- Interprofessional educational approaches

COURSE CONTENT

- IMRT/IGRT: Head & Neck
- SBRT: Liver, Lung, Spine
- Stereotactic Radiosurgery: Brain
- Quality & Safety in Radiation Therapy
- Accelerator Technology (ATec)



CUSTOMIZE YOUR LEARNING

The AEP provides interprofessional learning environments that are engaging, creative and interactive. A variety of learning formats are offered to help meet the needs of all of our learning partners:

- Asynchronous web-based materials available online – individually selected or in prepared educational packages
- Immersive live courses available in person and online
- On-site personalized learning plans targeting individual learning needs

