

## ABOUT US

The Princess Margaret Cancer Centre is one of the top 5 cancer research centres in the world and continues to lead the way in delivering world class personalized cancer medicine to patients.

The Radiation Medicine Program at the Princess Margaret is the world's largest single-site radiation facility, treating over 8,000 patients annually. As a global leader in radiation medicine research, clinical practice and education, RMP is committed to ensuring effective and efficient dissemination of knowledge and best practices worldwide.

For more details: [www.radiationatpm.com](http://www.radiationatpm.com)



# PERSONALIZED LEARNING PROGRAM

IN RADIATION MEDICINE

TRAINING GLOBAL LEADERS IN  
RADIATION MEDICINE

 **UHN** Princess  
Margaret  
Cancer Centre

ONE OF THE TOP 5  
CANCER RESEARCH  
CENTRES IN THE  
WORLD

## CONTACT US

To apply to the PLP in Radiation Medicine  
or for more information, please contact:

**Program Director:**  
Dr. Jennifer Croke  
[Jennifer.Croke@rmp.uhn.ca](mailto:Jennifer.Croke@rmp.uhn.ca)

**Program Coordinator:**  
Jenny Vargas  
[Jenny.Vargas@rmp.uhn.ca](mailto:Jenny.Vargas@rmp.uhn.ca)

**Website:** [www.aepeducation.ca](http://www.aepeducation.ca)





# PERSONALIZED LEARNING PROGRAM IN RADIATION MEDICINE

## PROGRAM OVERVIEW

The **Personalized Learning Program (PLP)** in Radiation Medicine is offered through the **Radiation Medicine Program (RMP)** at the Princess Margaret Cancer Centre. It provides a 6-12 month intensive observation experience designed to address the practical training needs of radiation medicine healthcare professionals around the world, offering exemplary education in advanced radiotherapy practice and delivery.

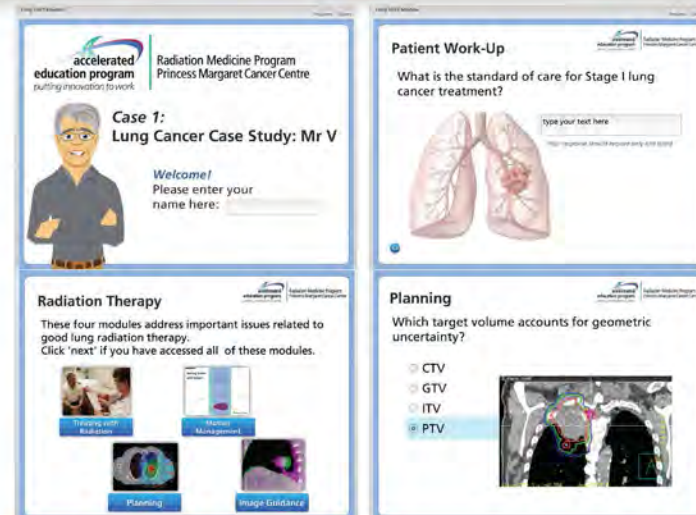
The PLP curriculum consists of individualized tutoring, clinical mentorship, self-study and on-site learning. Area(s) of clinical specialization can be tailored to specific learning requirements. For selected candidates, the opportunity to participate in research courses and projects can be structured into the program (for 12-month programs only).

Learners will be mentored by international leaders in various subspecialties and a team of top radiation medicine faculty members including radiation oncologists, physicists,

therapists and researchers. The high teacher to learner ratio provides participants with close interactions with faculty members and cultivates a rich and intimate learning environment. Participants will benefit from an individualized, goal-oriented curriculum based on true clinical cases, plus a variety of interactive simulation-based training.

## TRANSFORMATIVE INTERNATIONAL EDUCATION IN RADIATION MEDICINE

Upon successful completion of the PLP, learners will receive a Certificate of Completion. Participants will be well-versed in advanced skills in radiation medicine and the philosophical underpinnings behind high quality patient care as provided at the Princess Margaret. Learners will also build collaborative relationships between healthcare professionals and institutions, and become an alumni member of the Princess Margaret global network.



## QUICK FACTS

- 6-12 month immersive clinical observation experience with mentors
- Interaction with renowned experts
- Exposure to state-of-the-art facility & clinical care
- Various education courses of blended format (on-site & online):
  - AEP IMRT/IGRT: Head & Neck
  - AEP SBRT: Liver, Lung, Spine
  - AEP Stereotactic Radiosurgery: Brain
  - AEP Quality & Safety
  - AEP Accelerator Technology
  - Research
  - Radiation Physics
  - Clinical & Experimental Radiobiology
  - Educational lectures, journal clubs, conferences, clinical rounds

