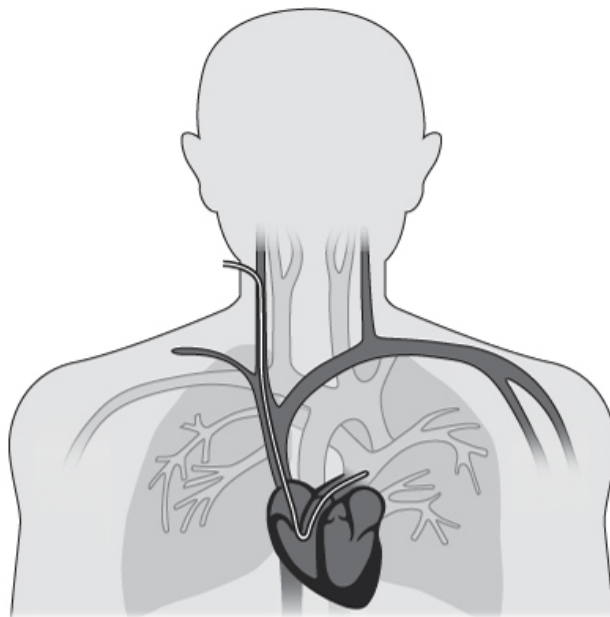


Pulmonary Artery Catheter



UHN



What is a Pulmonary Artery catheter?

A Pulmonary Artery (PA) catheter is soft, plastic tubing. It is put into a vein at the side of the neck or the groin area. The catheter is floated through a vein into your heart.

What is a PA catheter used for?

A PA catheter can be attached to a pressure monitoring line and a monitor. Doctors and nurses can use it to gather information about how your heart is working. This information also guides your healthcare team to make diagnosis and treatment decisions to give you the best care possible.

Where will I be when this line is inserted?

You will be in your bed and awake for the procedure. However, in some cases you may need to be transferred to the x-ray room to finish the procedure.

This information is to be used for informational purposes only and is not intended as a substitute for professional medical advice, diagnosis or treatment. Please consult your health care provider for advice about a specific medical condition. A single copy of these materials may be reprinted for non-commercial personal use only.

© 2010 University Health Network. All rights reserved.

Author: CICU Patient Education Committee, TGH

Created: 08/2008

Form: D-5538



University Health Network
Toronto General Hospital Toronto Western Hospital Princess Margaret Hospital

What medications will I receive before the procedure?

Before the procedure begins, the doctor will freeze the area where the line is placed.

If you feel a little anxious about the procedure, the doctor can give you medication to help you to feel more relaxed.

Will the procedure be painful?

You should not feel pain during the procedure, but you may feel some pressure in the area where the line is placed.

During the procedure, the doctor will ask you to turn your head to the side and cover your head with a green towel. You will be able to breathe at the side of the green towel. You can let the doctor know anytime you feel short of breath or discomfort.

Does the PA catheter hurt after it is inserted?

You may feel some discomfort or tenderness over the area where the catheter was placed, but you should not feel pain. You may take pain medication if you need it.

What other tests will I need to have?

- You will have a chest x-ray right after the catheter is placed.
- You will have a chest x-ray everyday while you have the catheter.
- Your nurse will watch you closely and record readings every hour.
- Your nurse may need to do other measurements and will ask you to rest for about five minutes before this is done. This will not be painful.

Will the PA catheter affect how I move?

You will need to move carefully.

Your nurse will make sure that it is secured with a dressing so that you will be able to sit up in a chair.



If you want to walk around for a little bit, you can ask your nurse for help.

How long will I need to have the catheter?

You will have this catheter until your condition gets better. It will be around an hour to one week.

Questions?

The doctors and nurses can answer any questions you may have.

