

You're invited!

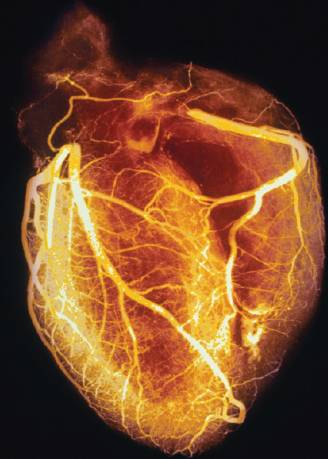
What: PUBLIC LECTURE: Treatment of Patients with **Multiple Sclerosis** by Dilation of Narrowed Veins in the Neck and Chest – Scientific, Moral and Ethical Considerations.

Who: All are welcome to join renowned vascular surgeon **Dr. Barry Rubin**, Medical Director of the Peter Munk Cardiac Centre at University Health Network

Where: Metropolitan Hotel, Mandarin Ballroom (See map on back)

When: Friday January 28th, 2011 at 6:00 p.m.

Cost: FREE (No registration required)



Presented by:



Peter Munk Cardiac Centre
University Health Network

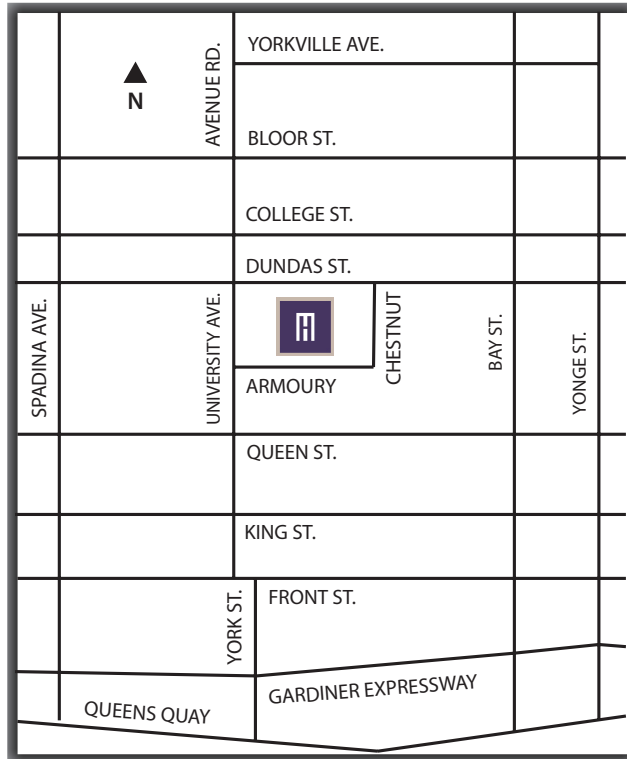
Did you know...?

- Arteries take blood from the heart to the brain and spinal cord, while veins drain blood from these organs back to the heart. **Dr. Paolo Zamboni**, a vascular surgeon from Italy, recently described an increased frequency of narrowed veins that drain the brain and spinal cord in patients with **Multiple Sclerosis**.
- In a research paper published last year, Dr. Zamboni stated that dilating these narrowed veins with a balloon led to improvement in some patients with **Multiple Sclerosis**.
- Many Canadians have traveled abroad for this experimental procedure, which is not currently offered in Canada. To date, the safety and effectiveness of this balloon dilation therapy in patients with **Multiple Sclerosis** has not been established.

Dr. Barry Rubin runs a tertiary referral practice in vascular surgery, and manages patients with a wide range of vascular diseases, including thoracic and abdominal aortic aneurysms, carotid stenosis, impaired circulation to the lower extremities, and blood clots in arteries and veins. He is the **Head of the Division of Vascular Surgery and Medical Director of the Peter Munk Cardiac Centre at University Health Network.**



Open Public Lecture on MULTIPLE SCLEROSIS



Metropolitan Hotel Toronto

(Near the corner of Armoury and University Avenue)

108 Chestnut Street

Toronto, Ontario

Canada M5G 1R3

Telephone: (416) 977-5000

NO REGISTRATION REQUIRED. Doors open at 5:50 p.m.

(Wheelchair Accessible)

For more information, contact Margaret Klys at **416-340-4800 ext 4709**.

The **Peter Munk Cardiac Centre** is supporting this event.

Presented by:

